



Sherree
VALENTINE-DAINES



LIMITED EDITIONS

The UK's foremost society painter has created an exclusive collector's edition celebrating the beauty and elegance of Royal Ascot. Overflowing with life and colour, this magnificent group scene will bring the quintessential social event of the season into your home - a welcome reminder of sunlit days to come.

AFTERNOON TEA AT ASCOT

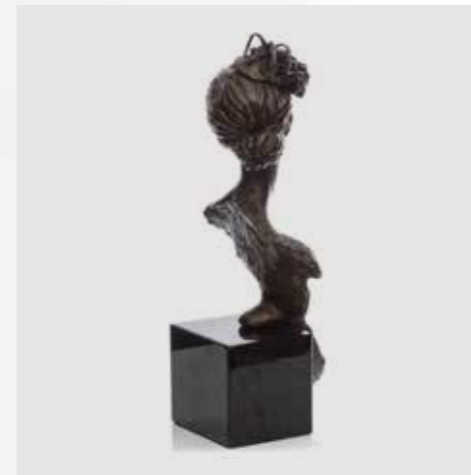
Canvas on Board Edition of 195

24" x 20"

£850







Be inspired by the style and elegance of these beautiful bronze sculptures of two society ladies dressed to impress for Royal Ascot.

ASCOT GLAMOUR

Bronze Sculpture Edition of 195

6" x 12"

£1,150



ASCOT VISION

Bronze Sculpture Edition of 195

6" x 12"

£1,150



ORIGINAL PAINTINGS

Sherree Valentine-Daines is one of the contemporary art world's most distinguished figures. She has been described as 'the face of modern British impressionism' and 'the finest figurative artist we have here in the UK' (Art of England); she has won a multitude of high profile awards and she has been officially voted the UK's leading Modern Impressionist.

Sherree's painterly scenes of high society are inspired by such traditional events as Royal Ascot, the Henley Regatta and the Royal Windsor Horse Show. In 2016 she received the ultimate society commission when the Royal Household invited her to paint their 90th birthday gift for Her Majesty the Queen. But alongside her feted position as our leading society artist, Sherree is also a warm and inspirational individual, and her sunlit artwork reflects the things she loves and believes in, which includes the constant beauty and charm of the British coastline, and of course, the magic of childhood. Her work is included in numerous important private collections including other members of the British Royal Family and former Prime Minister Sir John Major. Many famous names have sat for her including Lord Sebastian Coe, Rick Stein, Johnny Wilkinson, Joanna Lumley, Dame Vera Lynn and Ranulph Fiennes.

A woman in a white dress is shown from the chest up, holding a large bouquet of flowers. She is smiling slightly and looking down at the flowers. The background is a soft, out-of-focus setting with a red cushion visible on the left. The word "SOCIETY" is centered on the right side of the image, flanked by two horizontal lines with decorative flourishes at their ends.

SOCIETY



LADY IN WHITE, ASCOT

Original Painting on Board

14" x 16"

GREEN SILKS
Original Painting on Board
7" x 12"

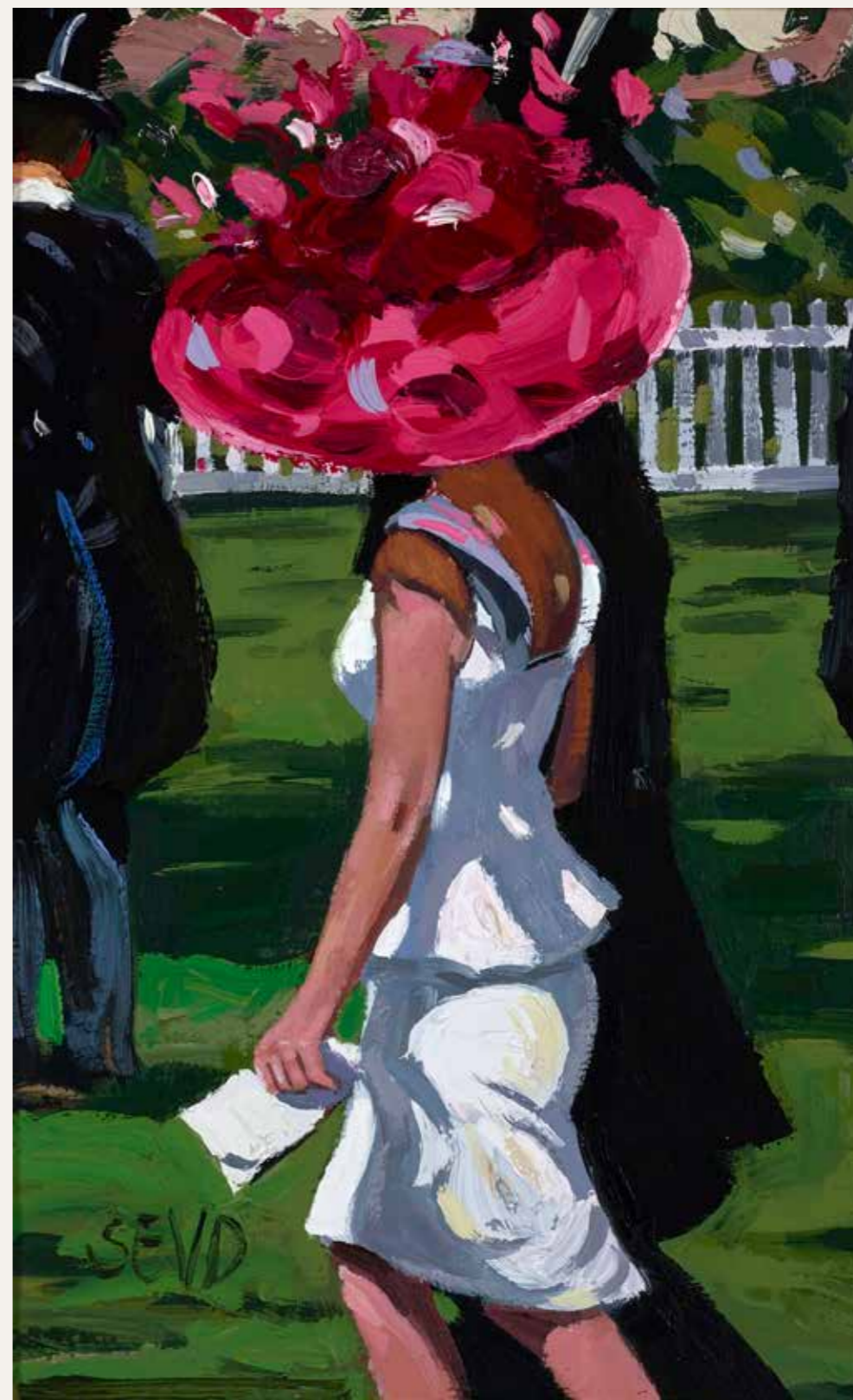




LADY IN WHITE

Varnished Original Painting on Board

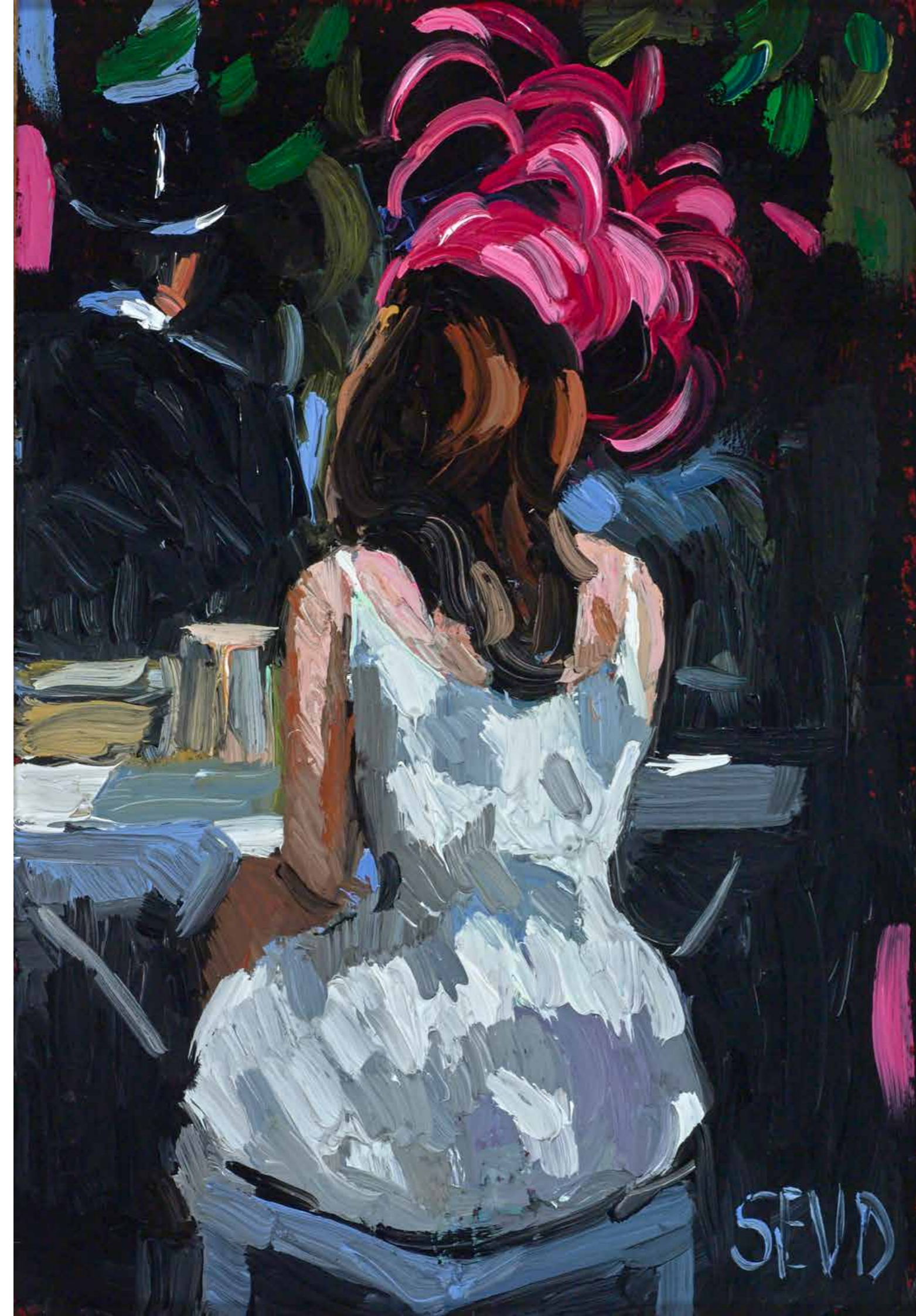
7" x 11"



ASCOT GLAMOUR

Original Painting on Board

7" x 11"



ASCOT BEAUTY

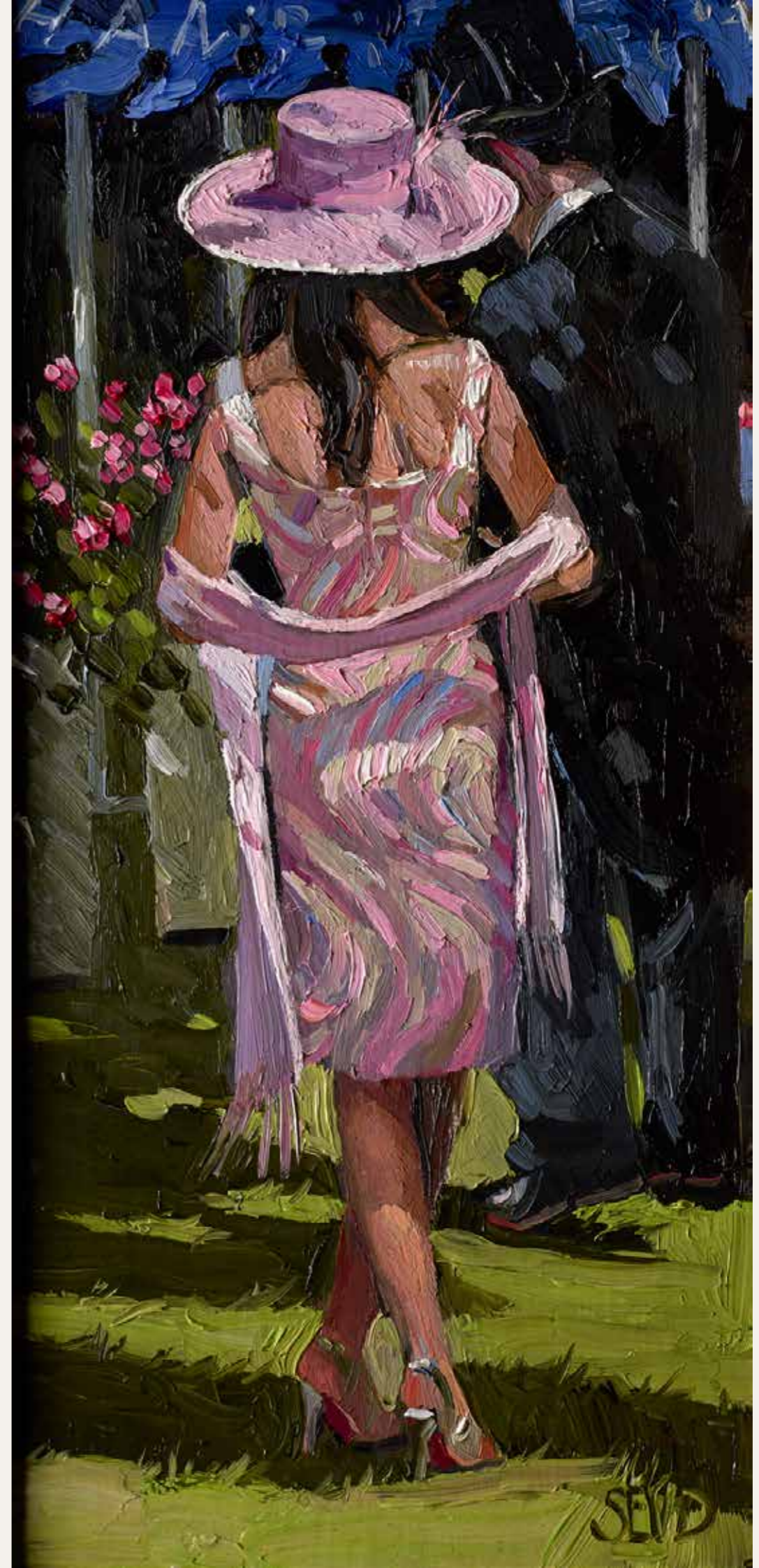
Original Painting on Board

5" x 7"

LADY IN PINK, ASCOT

Original Painting on Board

7" x 14"





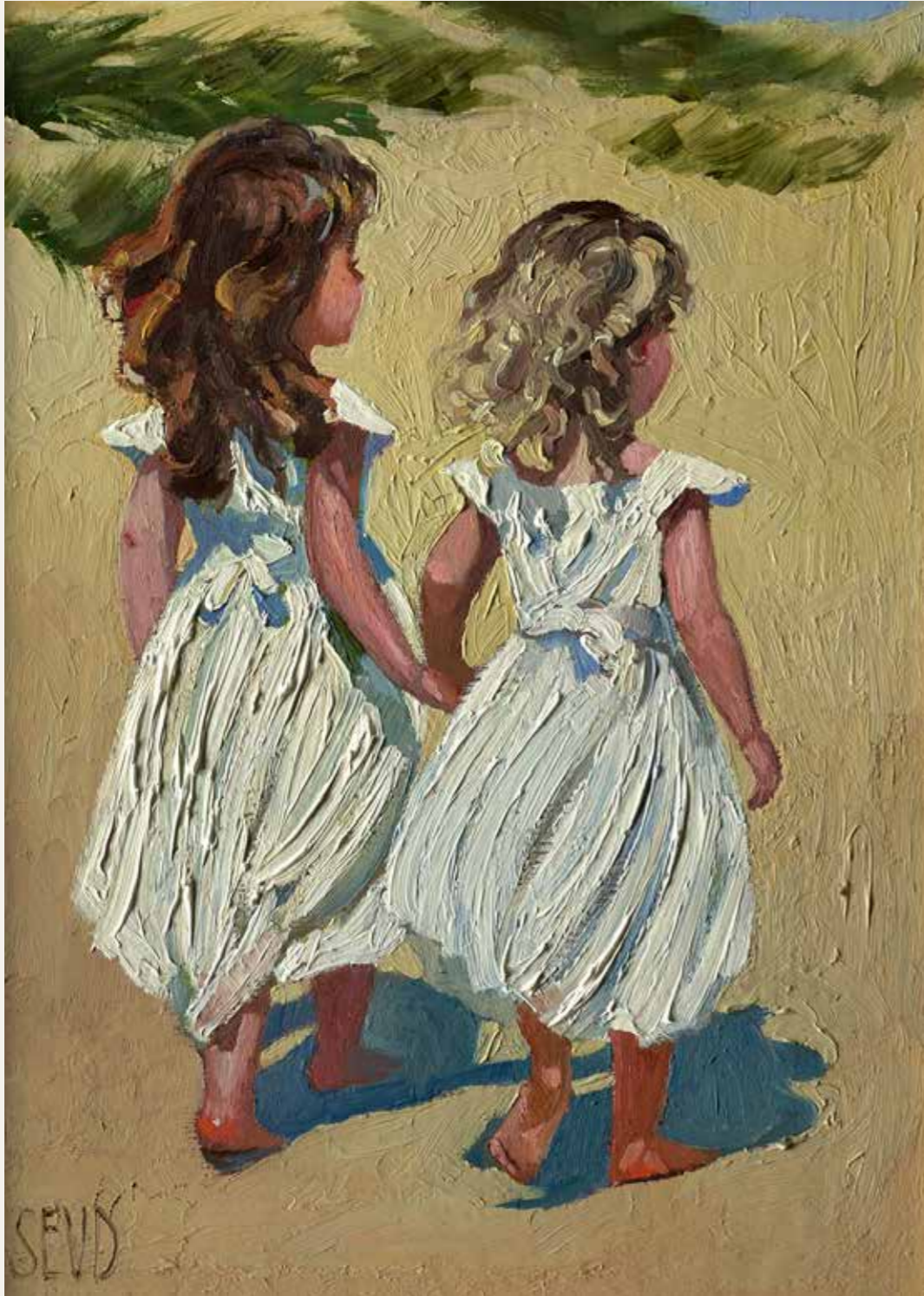
—
SEASIDE MEMORIES
—



STUDY FOR ON THE JETTY

Original Painting on Board

14" x 16"



STUDY FOR BEACH BABIES

Original Painting on Board

9" x 12"



HAND IN HAND

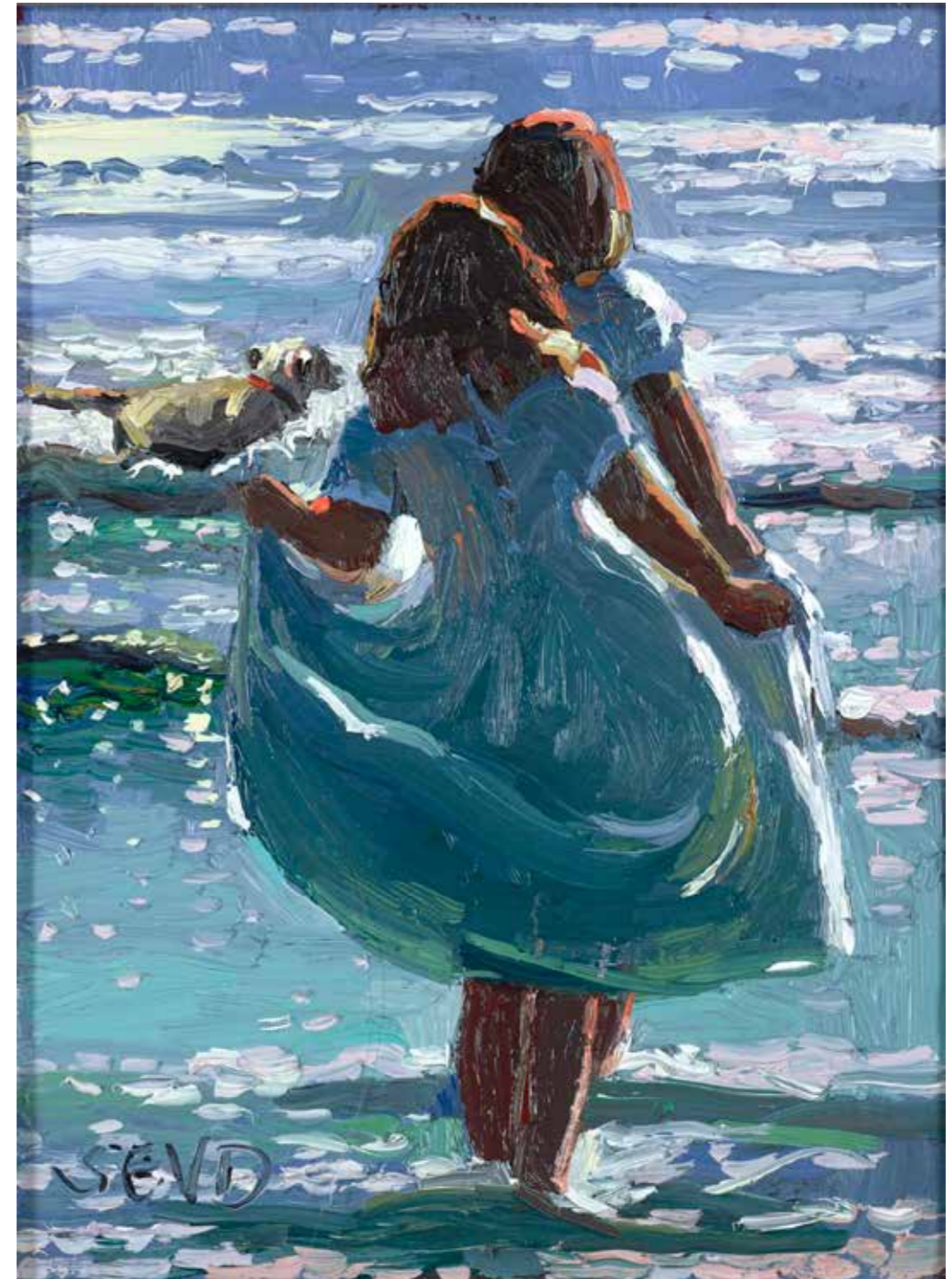
Original Painting on Board

9" x 12"

FROLICKING IN THE SURF

Original Painting on Board

6" x 8"

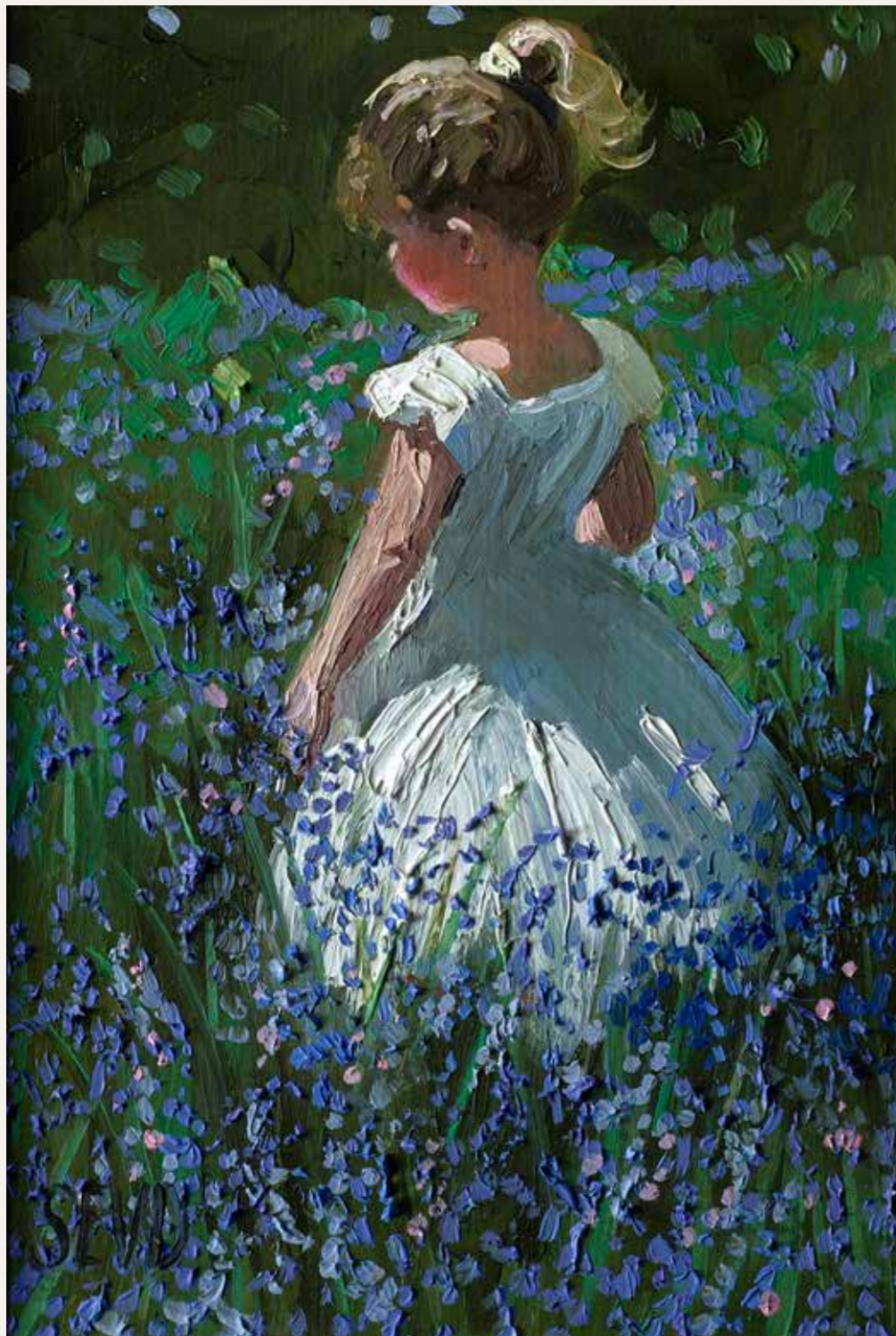




STUDY FOR PERFECT
SUMMER'S DAY

Original Painting on Board

20" x 18"



BLUEBELL HAVEN

Original Painting on Board

7" x 10"



CAREFREE DAYS

Original Painting on Board

7" x 9"

DISCOVERY AND ADVENTURE

Original Painting on Board

10" x 16"





THE GREEN NET

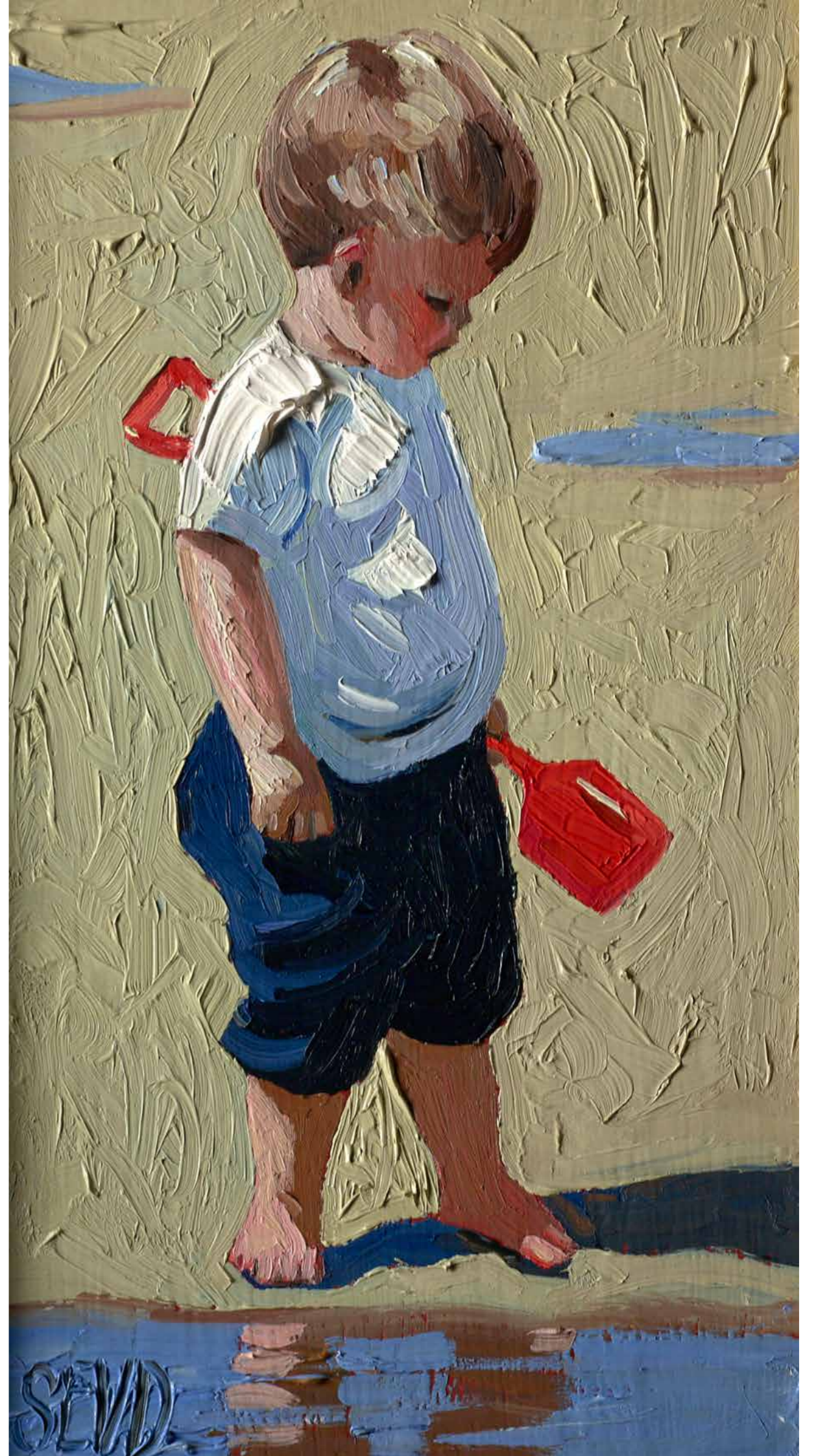
Varnished Original Painting on Board

5" x 10"

DIGGING FOR TREASURE

Original Painting on Board

7" x 12"





EVENING ON THE JETTY

Original Painting on Board

8" x 10"

Sherree
VALENTINE-DAINES

